

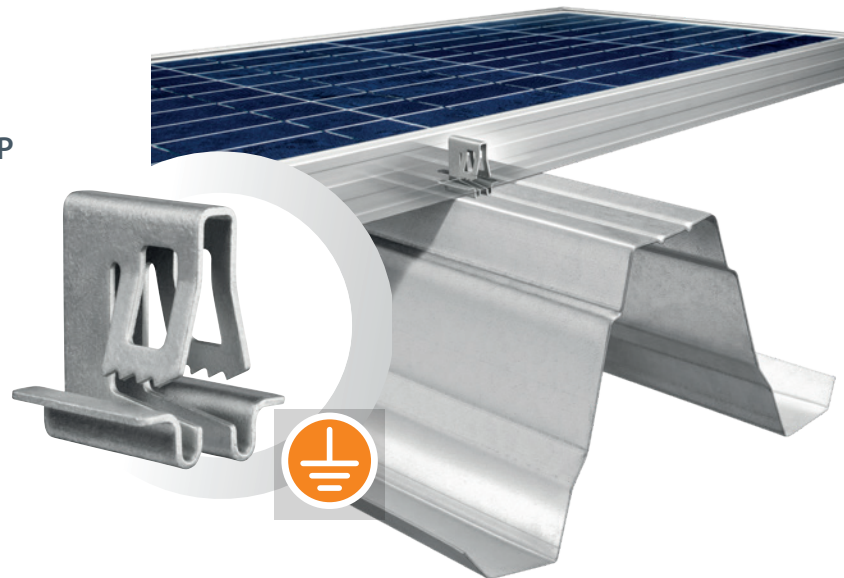
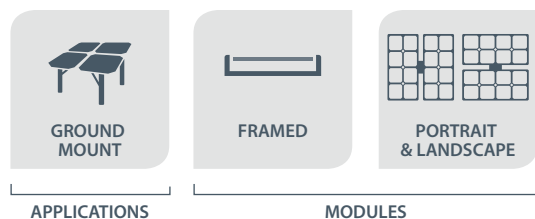
FASTENING & GROUNDING CLIP FOR FRAMED MODULES



Screwless and tool-free clipped fastening solutions provide fast and simple assembly, enabling customers to reduce the overall cost of renewable energies.

PowAR Slot

COMBINED **FASTENING & GROUNDING** CLIP
FOR FRAMED PV MODULE



Benefits

QUICK

- Fastening and grounding in a single operation.
- 1 module installed in less than 30 seconds⁽¹⁾.

COST SAVING

- Quick and tool free installation
- Lower maintenance costs: screwless, no periodic torque control required
- Hot spot risk reduction for PV modules thanks to elastic mechanical clamping⁽²⁾



EASY TO USE

- Easy panel alignment, specifically designed for uneven terrain
- Installation friendly: clips can be inserted from underneath the array
- Easy to dismount from the module's backside

APPROVALS

- Clip tested by ARaymond Energies test center
- Qualified by major module manufacturers⁽³⁾
- Tested by SERMA TECHNOLOGIES according to IEC 61215 - 2016

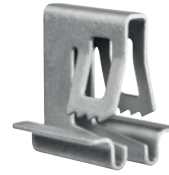
(1) According to field tests results available upon request.

(2) Mechanical shocks and daily thermal cycles often induce micro-cracks within cells, leading to hot spots and power output degradation.

(3) Report available upon request.

PowAR Slot: FASTENING & GROUNDING CLIP FOR FRAMED MODULES OR GROUND MOUNT

TECHNICAL SPECIFICATIONS

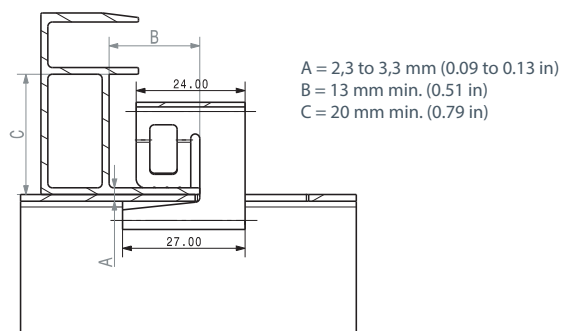


PowAR Slot		
PRODUCT DETAILS	ARTICLE N°	247767
	MATERIAL	Steel 1.1231- DIN EN 10132:2000 (SAE 1070- ASTM AISI)
	SURFACE TREATMENT	Zn Al Flake Coating
	DIMENSIONS	in mm
		27 x 22 x 28
PERFORMANCES	WEIGHT IN G	in inches
		1.063 x 0.866 x 1.102
	MECHANICAL RESISTANCE	Load +5400/-2400 Pa compliant with IEC 61215-1-2.16:2016
	CORROSION RESISTANCE	No red rust after 720 hours salt spray acc. EN 60068-2-11:1999
ENVIRONMENT	GROUNDING CONTINUITY	Compliant with CEI 61439-1 (2011) § 10.5.2 and salt mist test, acc. to NF EN 60068-2-11 (1999) certified by Veritas. Internal tested after 1 000 hours
	PV MODULE SPECIFICATIONS	For W, V and B see module specification
	RAIL SPECIFICATIONS	For L, M and N see the below rail interface design

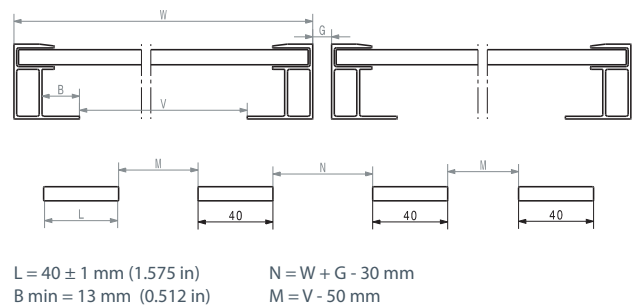
Product information disclosed in this "datasheet" can be modified without any previous notice.

EXAMPLES OF RAIL SPECIFICATIONS

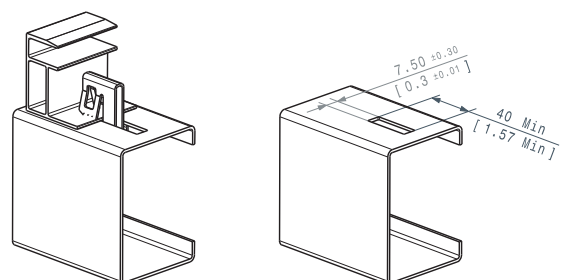
Cross section view & PV module specifications



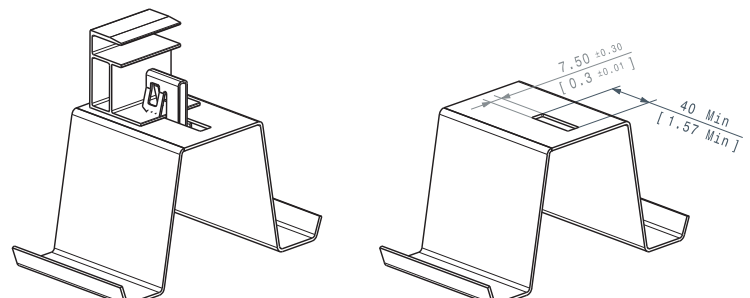
Rail interface design rules for adjustment capability of ± 15 mm



C-Shape configuration



Hat-Shape configuration



Factory: 01/100, Valliammai Nagar, Kovur, Chennai – 600 128.

Reg Office: Plot 30, 8th Street, S1 Rajeshwari Apartment, Madha Nagar, Chennai - 600 125.

Mail: sales@esvconnects.com / Website: www.esvconnects.com